

#### Legend

- ★ 123 S Main Street  
Sand Springs, OK 74063
- 1 Mile
- 3 Miles
- 5 Miles
- 10 Miles
- Sand Springs  
Corporate Limits

## 1, 3, 5 & 10 Mile Buffers from 123 S Main Street Sand Springs OK

Date: 8/9/2017

This map is provided as a public resource for general information only. Although every effort has been made to produce the most current, correct and clearly expressed data possible, all geographic information has limitations due to scale, resolution, date and interpretation of the original source materials. The information on this map is collected from various sources that can change over time without notice. Therefore, the information provided is not intended to replace any official source. You should not act or refrain from acting based upon information on this map without independently verifying the information and, if necessary, obtaining professional advice. The burden of determining the accuracy, completeness, timeliness of information rests solely on the user. Copyright © 2015 INCOG



## Demographic and Income Profile

Sand Springs  
Lat.: 36.135 Long.: -96.110  
Ring: 1 mile radius

Prepared by INCOG  
Latitude: 36.13492  
Longitude: -96.10973

Summary	Census 2010	2017	2022				
Population	3,835	3,870	3,937				
Households	1,550	1,543	1,560				
Families	969	950	954				
Average Household Size	2.46	2.49	2.51				
Owner Occupied Housing Units	814	765	770				
Renter Occupied Housing Units	736	779	790				
Median Age	37.0	38.2	38.4				
Trends: 2017 - 2022 Annual Rate	Area	State	National				
Population	0.34%	0.90%	0.83%				
Households	0.22%	0.84%	0.79%				
Families	0.08%	0.76%	0.71%				
Owner HHs	0.13%	0.85%	0.72%				
Median Household Income	0.99%	1.64%	2.12%				
Households by Income	2017		2022				
	Number	Percent	Number	Percent			
	<\$15,000	219	14.2%	225	14.4%		
	\$15,000 - \$24,999	243	15.7%	237	15.2%		
	\$25,000 - \$34,999	235	15.2%	217	13.9%		
	\$35,000 - \$49,999	283	18.3%	251	16.1%		
	\$50,000 - \$74,999	272	17.6%	253	16.2%		
	\$75,000 - \$99,999	123	8.0%	149	9.6%		
	\$100,000 - \$149,999	113	7.3%	156	10.0%		
	\$150,000 - \$199,999	29	1.9%	38	2.4%		
	\$200,000+	25	1.6%	34	2.2%		
Median Household Income	\$37,921		\$39,840				
Average Household Income	\$52,279		\$60,015				
Per Capita Income	\$21,980		\$25,102				
Population by Age	Census 2010		2017		2022		
	Number	Percent	Number	Percent	Number	Percent	
	0 - 4	262	6.8%	250	6.5%	254	6.5%
	5 - 9	237	6.2%	237	6.1%	237	6.0%
	10 - 14	273	7.1%	255	6.6%	270	6.9%
	15 - 19	291	7.6%	245	6.3%	254	6.5%
	20 - 24	268	7.0%	263	6.8%	238	6.0%
	25 - 34	487	12.7%	532	13.8%	534	13.6%
	35 - 44	492	12.8%	459	11.9%	495	12.6%
	45 - 54	542	14.1%	477	12.3%	432	11.0%
	55 - 64	450	11.7%	514	13.3%	506	12.9%
	65 - 74	274	7.1%	351	9.1%	395	10.0%
	75 - 84	188	4.9%	200	5.2%	231	5.9%
	85+	71	1.9%	85	2.2%	91	2.3%
	Race and Ethnicity	Census 2010		2017		2022	
		Number	Percent	Number	Percent	Number	Percent
White Alone		3,109	81.1%	3,052	78.9%	3,033	77.0%
Black Alone		53	1.4%	57	1.5%	60	1.5%
American Indian Alone		363	9.5%	391	10.1%	418	10.6%
Asian Alone		14	0.4%	20	0.5%	26	0.7%
Pacific Islander Alone		0	0.0%	0	0.0%	0	0.0%
Some Other Race Alone		53	1.4%	68	1.8%	85	2.2%
Two or More Races		243	6.3%	281	7.3%	315	8.0%
Hispanic Origin (Any Race)		177	4.6%	222	5.7%	270	6.9%

**Data Note:** Income is expressed in current dollars.

**Source:** U.S. Census Bureau, Census 2010 Summary File 1. Esri forecasts for 2017 and 2022.

August 09, 2017

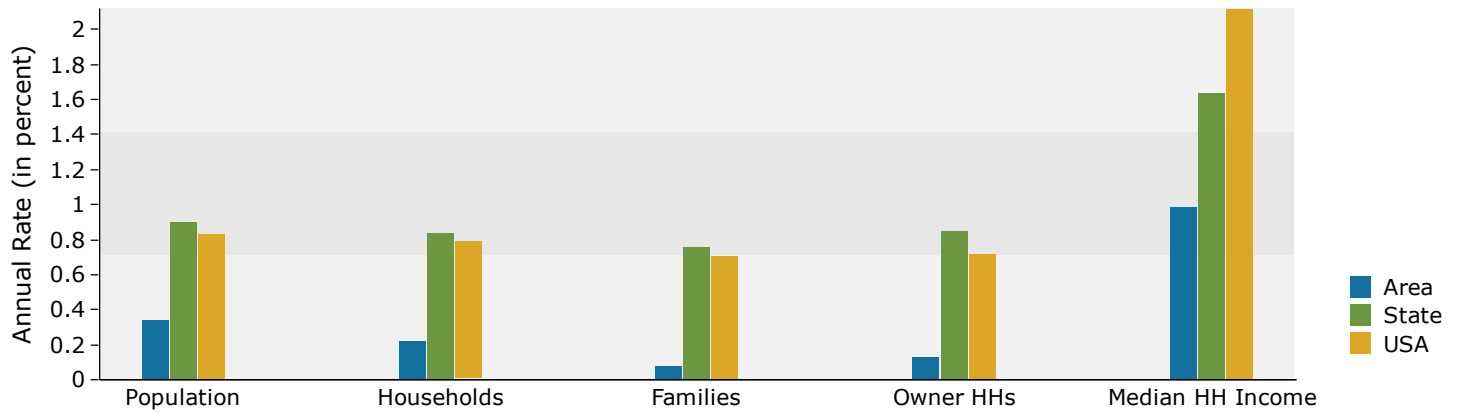


## Demographic and Income Profile

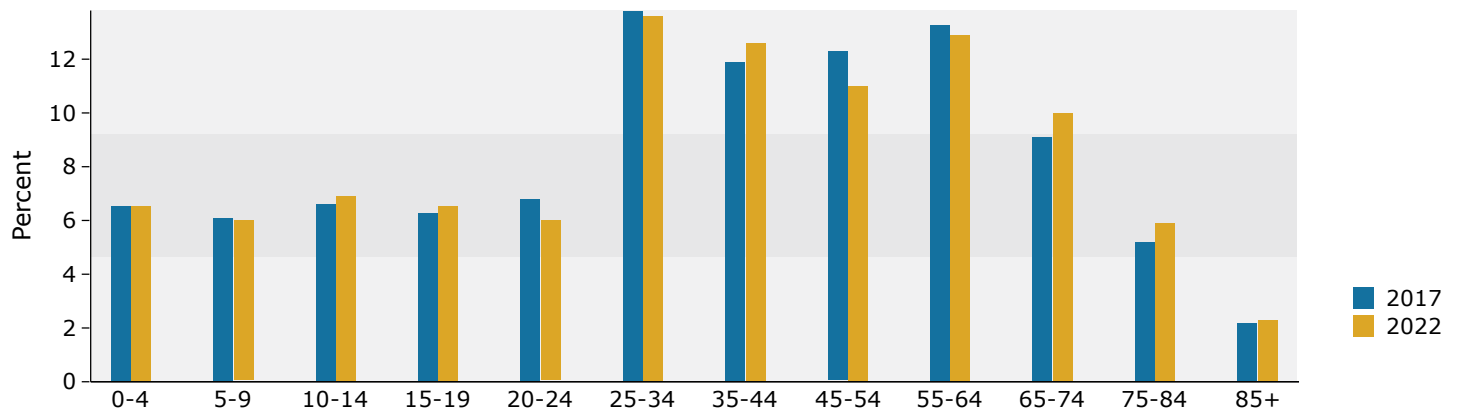
Sand Springs  
Lat.: 36.135 Long.: -96.110  
Ring: 1 mile radius

Prepared by INCOG  
Latitude: 36.13492  
Longitude: -96.10973

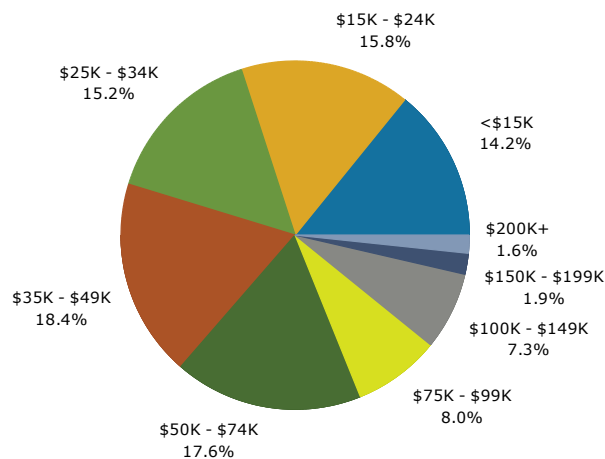
### Trends 2017-2022



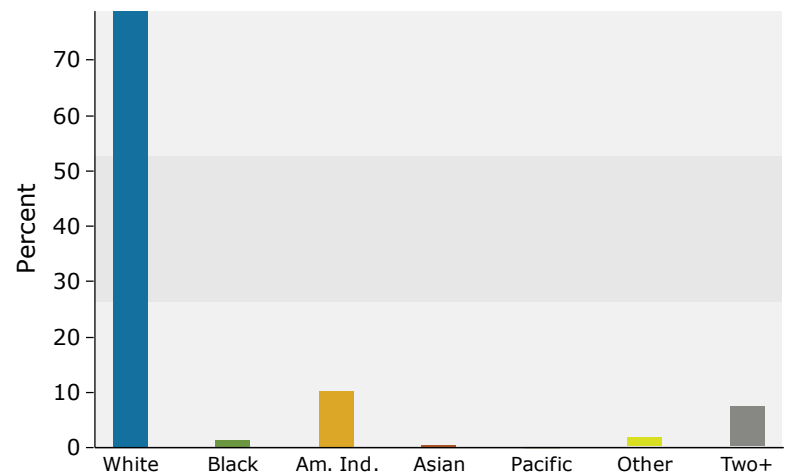
### Population by Age



### 2017 Household Income



### 2017 Population by Race



2017 Percent Hispanic Origin: 5.7%

Source: U.S. Census Bureau, Census 2010 Summary File 1. Esri forecasts for 2017 and 2022.

August 09, 2017



# Demographic and Income Profile

Sand Springs  
Lat.: 36.135 Long.: -96.110  
Ring: 3 mile radius

Prepared by INCOG  
Latitude: 36.13492  
Longitude: -96.10973

Summary	Census 2010		2017		2022	
Population	21,112		22,404		23,448	
Households	8,214		8,614		8,973	
Families	5,804		6,021		6,246	
Average Household Size	2.54		2.57		2.59	
Owner Occupied Housing Units	5,579		5,664		5,912	
Renter Occupied Housing Units	2,635		2,950		3,061	
Median Age	36.8		38.2		39.0	
Trends: 2017 - 2022 Annual Rate	Area		State		National	
Population	0.92%		0.90%		0.83%	
Households	0.82%		0.84%		0.79%	
Families	0.74%		0.76%		0.71%	
Owner HHs	0.86%		0.85%		0.72%	
Median Household Income	1.64%		1.64%		2.12%	
Households by Income	2017		2022			
	Number	Percent	Number	Percent		
<\$15,000	1,028	11.9%	1,056	11.8%		
\$15,000 - \$24,999	1,013	11.8%	982	10.9%		
\$25,000 - \$34,999	919	10.7%	854	9.5%		
\$35,000 - \$49,999	1,290	15.0%	1,165	13.0%		
\$50,000 - \$74,999	1,740	20.2%	1,637	18.2%		
\$75,000 - \$99,999	1,027	11.9%	1,209	13.5%		
\$100,000 - \$149,999	1,021	11.9%	1,324	14.8%		
\$150,000 - \$199,999	334	3.9%	429	4.8%		
\$200,000+	242	2.8%	318	3.5%		
Median Household Income	\$50,527		\$54,799			
Average Household Income	\$66,070		\$75,826			
Per Capita Income	\$25,471		\$29,031			
Population by Age	Census 2010		2017		2022	
	Number	Percent	Number	Percent	Number	Percent
0 - 4	1,486	7.0%	1,487	6.6%	1,536	6.6%
5 - 9	1,563	7.4%	1,498	6.7%	1,530	6.5%
10 - 14	1,617	7.7%	1,575	7.0%	1,657	7.1%
15 - 19	1,619	7.7%	1,544	6.9%	1,626	6.9%
20 - 24	1,197	5.7%	1,301	5.8%	1,220	5.2%
25 - 34	2,578	12.2%	2,891	12.9%	2,907	12.4%
35 - 44	2,682	12.7%	2,740	12.2%	3,047	13.0%
45 - 54	2,984	14.1%	2,840	12.7%	2,754	11.7%
55 - 64	2,477	11.7%	2,923	13.0%	2,989	12.7%
65 - 74	1,580	7.5%	2,084	9.3%	2,406	10.3%
75 - 84	1,008	4.8%	1,110	5.0%	1,329	5.7%
85+	321	1.5%	408	1.8%	446	1.9%
Race and Ethnicity	Census 2010		2017		2022	
	Number	Percent	Number	Percent	Number	Percent
White Alone	16,857	79.8%	17,423	77.8%	17,811	76.0%
Black Alone	623	3.0%	685	3.1%	733	3.1%
American Indian Alone	2,037	9.6%	2,305	10.3%	2,539	10.8%
Asian Alone	107	0.5%	162	0.7%	214	0.9%
Pacific Islander Alone	2	0.0%	4	0.0%	6	0.0%
Some Other Race Alone	204	1.0%	275	1.2%	352	1.5%
Two or More Races	1,281	6.1%	1,551	6.9%	1,794	7.7%
Hispanic Origin (Any Race)	746	3.5%	968	4.3%	1,207	5.1%

**Data Note:** Income is expressed in current dollars.

**Source:** U.S. Census Bureau, Census 2010 Summary File 1. Esri forecasts for 2017 and 2022.

August 09, 2017



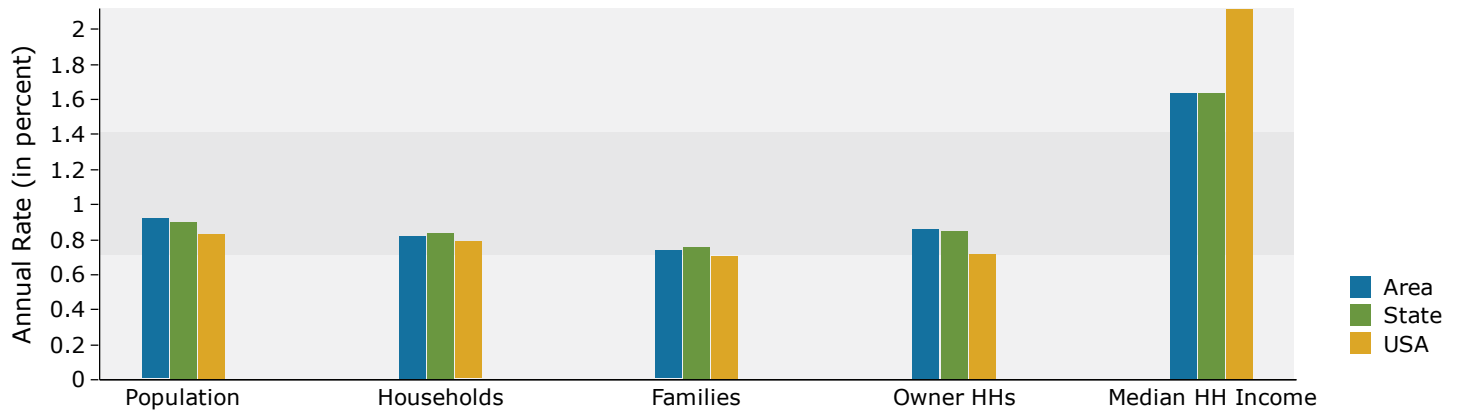


## Demographic and Income Profile

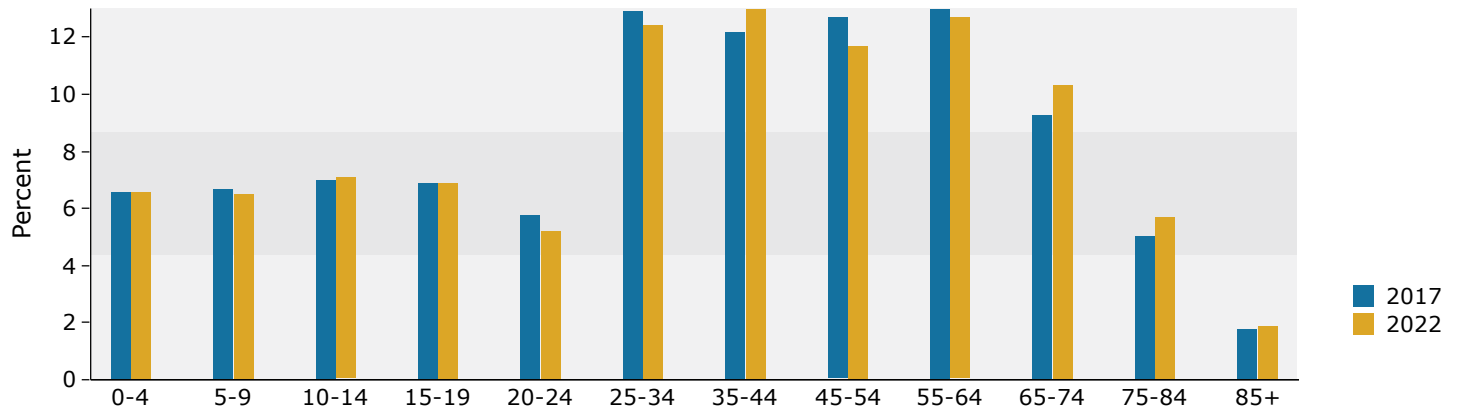
Sand Springs  
Lat.: 36.135 Long.: -96.110  
Ring: 3 mile radius

Prepared by INCOG  
Latitude: 36.13492  
Longitude: -96.10973

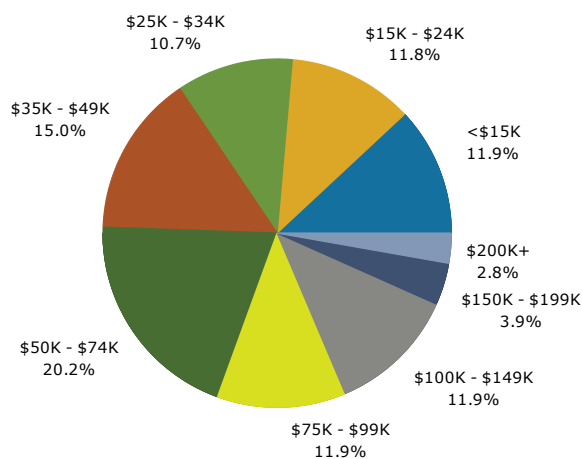
### Trends 2017-2022



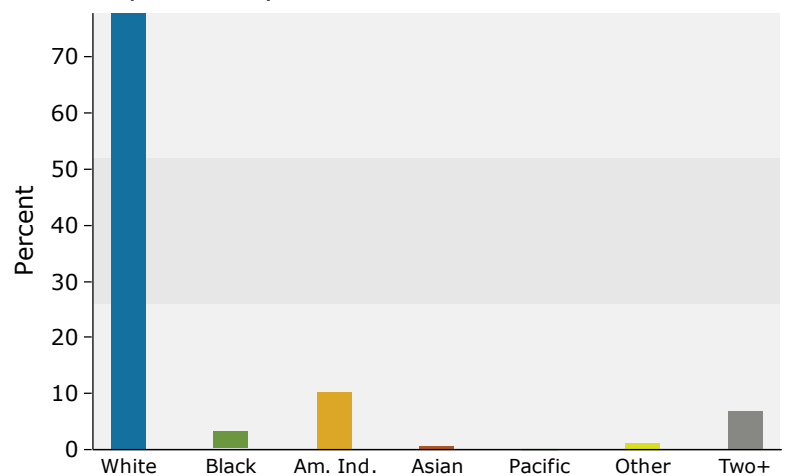
### Population by Age



### 2017 Household Income



### 2017 Population by Race



2017 Percent Hispanic Origin: 4.3%

Source: U.S. Census Bureau, Census 2010 Summary File 1. Esri forecasts for 2017 and 2022.

August 09, 2017



# Demographic and Income Profile

Sand Springs  
Lat.: 36.135 Long.: -96.110  
Ring: 5 mile radius

Prepared by INCOG  
Latitude: 36.13492  
Longitude: -96.10973

Summary	Census 2010		2017		2022			
Population	37,604		39,759		41,526			
Households	14,622		15,291		15,900			
Families	10,314		10,663		11,032			
Average Household Size	2.55		2.58		2.59			
Owner Occupied Housing Units	10,448		10,567		10,959			
Renter Occupied Housing Units	4,174		4,723		4,941			
Median Age	38.1		39.3		40.0			
Trends: 2017 - 2022 Annual Rate	Area		State		National			
Population	0.87%		0.90%		0.83%			
Households	0.78%		0.84%		0.79%			
Families	0.68%		0.76%		0.71%			
Owner HHs	0.73%		0.85%		0.72%			
Median Household Income	1.56%		1.64%		2.12%			
			2017		2022			
Households by Income			Number	Percent	Number	Percent		
	<\$15,000		1,933	12.6%	2,002	12.6%		
	\$15,000 - \$24,999		1,749	11.4%	1,701	10.7%		
	\$25,000 - \$34,999		1,682	11.0%	1,571	9.9%		
	\$35,000 - \$49,999		2,391	15.6%	2,155	13.6%		
	\$50,000 - \$74,999		3,196	20.9%	2,996	18.8%		
	\$75,000 - \$99,999		1,725	11.3%	2,036	12.8%		
	\$100,000 - \$149,999		1,723	11.3%	2,269	14.3%		
	\$150,000 - \$199,999		572	3.7%	749	4.7%		
	\$200,000+		320	2.1%	421	2.6%		
	Median Household Income		\$49,075		\$53,037			
Average Household Income		\$63,097		\$72,207				
Per Capita Income		\$24,367		\$27,717				
			2017		2022			
Population by Age	Census 2010							
	Number	Percent	Number	Percent	Number	Percent		
	0 - 4		2,571	6.8%	2,546	6.4%	2,625	6.3%
	5 - 9		2,698	7.2%	2,595	6.5%	2,645	6.4%
	10 - 14		2,730	7.3%	2,684	6.8%	2,841	6.8%
	15 - 19		2,741	7.3%	2,614	6.6%	2,763	6.7%
	20 - 24		2,034	5.4%	2,255	5.7%	2,129	5.1%
	25 - 34		4,571	12.2%	5,012	12.6%	5,076	12.2%
	35 - 44		4,772	12.7%	4,862	12.2%	5,282	12.7%
	45 - 54		5,555	14.8%	5,157	13.0%	4,947	11.9%
	55 - 64		4,622	12.3%	5,407	13.6%	5,488	13.2%
	65 - 74		2,929	7.8%	3,922	9.9%	4,520	10.9%
75 - 84		1,793	4.8%	1,982	5.0%	2,442	5.9%	
85+		588	1.6%	724	1.8%	767	1.8%	
			2017		2022			
Race and Ethnicity	Census 2010							
	Number	Percent	Number	Percent	Number	Percent		
	White Alone		29,807	79.3%	30,683	77.2%	31,289	75.3%
	Black Alone		1,093	2.9%	1,198	3.0%	1,279	3.1%
	American Indian Alone		3,770	10.0%	4,226	10.6%	4,621	11.1%
	Asian Alone		165	0.4%	248	0.6%	328	0.8%
	Pacific Islander Alone		10	0.0%	18	0.0%	26	0.1%
	Some Other Race Alone		507	1.3%	683	1.7%	877	2.1%
	Two or More Races		2,252	6.0%	2,702	6.8%	3,105	7.5%
Hispanic Origin (Any Race)		1,495	4.0%	1,954	4.9%	2,439	5.9%	

**Data Note:** Income is expressed in current dollars.

**Source:** U.S. Census Bureau, Census 2010 Summary File 1. Esri forecasts for 2017 and 2022.

August 09, 2017

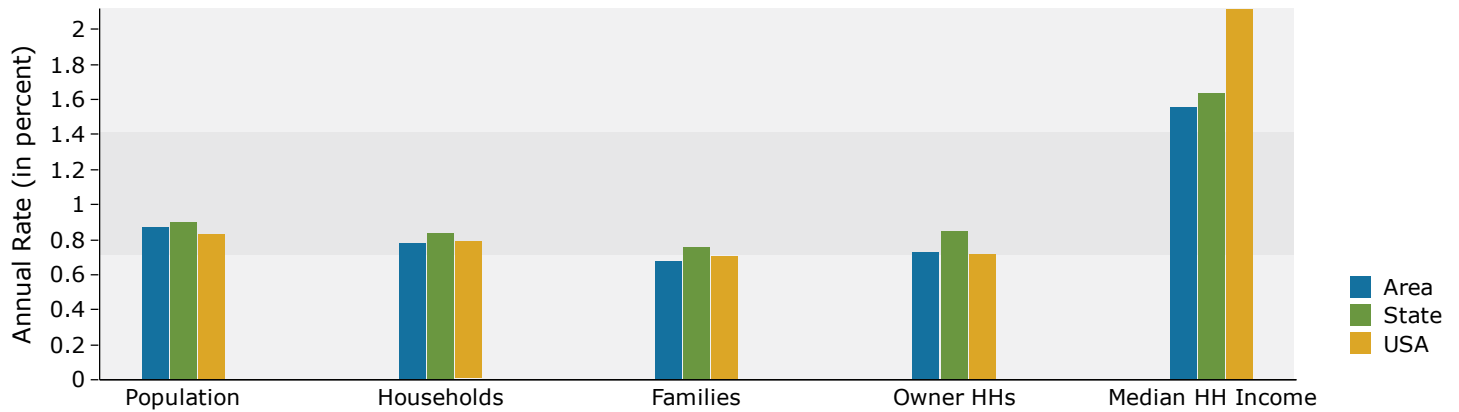


## Demographic and Income Profile

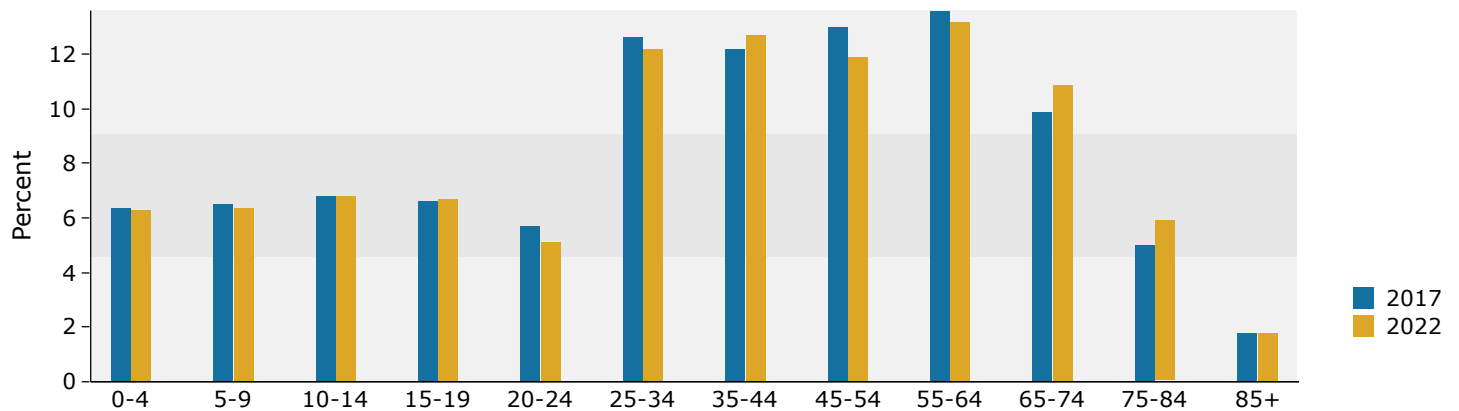
Sand Springs  
Lat.: 36.135 Long.: -96.110  
Ring: 5 mile radius

Prepared by INCOG  
Latitude: 36.13492  
Longitude: -96.10973

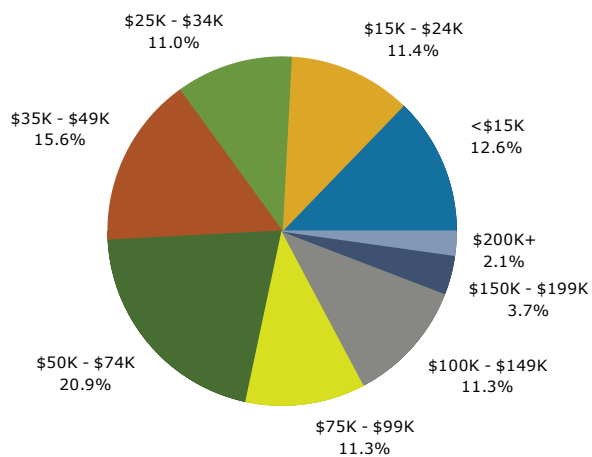
### Trends 2017-2022



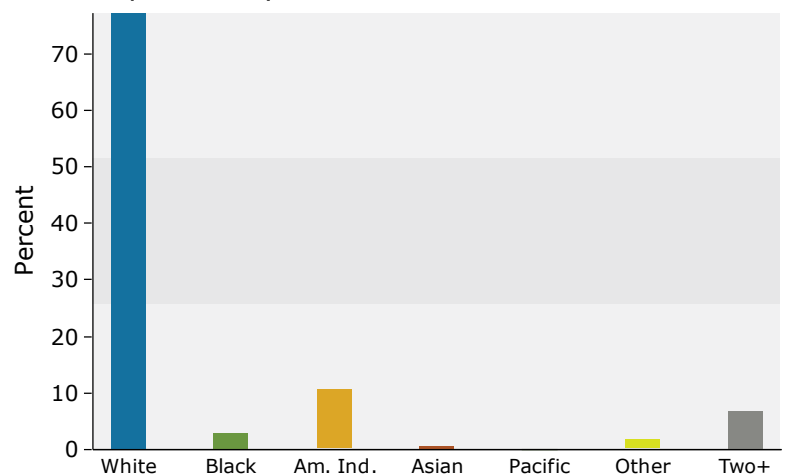
### Population by Age



### 2017 Household Income



### 2017 Population by Race



2017 Percent Hispanic Origin: 4.9%



# Demographic and Income Profile

Sand Springs  
Lat.: 36.135 Long.: -96.110  
Ring: 10 mile radius

Prepared by INCOG

Summary	Census 2010		2017		2022	
Population	212,427		225,474		235,579	
Households	88,894		93,578		97,560	
Families	51,801		53,624		55,437	
Average Household Size	2.32		2.34		2.35	
Owner Occupied Housing Units	50,442		50,644		52,507	
Renter Occupied Housing Units	38,452		42,934		45,053	
Median Age	36.1		37.3		38.0	
Trends: 2017 - 2022 Annual Rate	Area		State		National	
Population	0.88%		0.90%		0.83%	
Households	0.84%		0.84%		0.79%	
Families	0.67%		0.76%		0.71%	
Owner HHs	0.73%		0.85%		0.72%	
Median Household Income	1.50%		1.64%		2.12%	
Households by Income	2017		2022			
	Number	Percent	Number	Percent		
<\$15,000	16,523	17.7%	17,209	17.6%		
\$15,000 - \$24,999	12,508	13.4%	12,322	12.6%		
\$25,000 - \$34,999	10,973	11.7%	10,442	10.7%		
\$35,000 - \$49,999	13,596	14.5%	12,616	12.9%		
\$50,000 - \$74,999	15,062	16.1%	14,586	15.0%		
\$75,000 - \$99,999	8,291	8.9%	9,987	10.2%		
\$100,000 - \$149,999	8,738	9.3%	11,055	11.3%		
\$150,000 - \$199,999	3,470	3.7%	4,239	4.3%		
\$200,000+	4,416	4.7%	5,105	5.2%		
Median Household Income	\$41,278		\$44,468			
Average Household Income	\$66,147		\$74,177			
Per Capita Income	\$27,955		\$31,185			
Population by Age	Census 2010		2017		2022	
	Number	Percent	Number	Percent	Number	Percent
0 - 4	15,184	7.1%	14,907	6.6%	15,427	6.5%
5 - 9	14,181	6.7%	14,487	6.4%	14,652	6.2%
10 - 14	13,285	6.3%	13,942	6.2%	14,604	6.2%
15 - 19	14,313	6.7%	13,913	6.2%	14,706	6.2%
20 - 24	15,644	7.4%	16,368	7.3%	16,279	6.9%
25 - 34	30,590	14.4%	32,591	14.5%	33,123	14.1%
35 - 44	26,491	12.5%	27,551	12.2%	29,480	12.5%
45 - 54	30,495	14.4%	28,066	12.4%	27,505	11.7%
55 - 64	25,838	12.2%	29,274	13.0%	29,188	12.4%
65 - 74	14,199	6.7%	20,442	9.1%	23,985	10.2%
75 - 84	8,595	4.0%	9,595	4.3%	12,113	5.1%
85+	3,615	1.7%	4,335	1.9%	4,518	1.9%
Race and Ethnicity	Census 2010		2017		2022	
	Number	Percent	Number	Percent	Number	Percent
White Alone	135,863	64.0%	139,955	62.1%	142,244	60.4%
Black Alone	38,023	17.9%	39,838	17.7%	41,085	17.4%
American Indian Alone	14,439	6.8%	15,831	7.0%	16,961	7.2%
Asian Alone	2,024	1.0%	3,034	1.3%	3,922	1.7%
Pacific Islander Alone	114	0.1%	214	0.1%	286	0.1%
Some Other Race Alone	9,220	4.3%	11,682	5.2%	14,299	6.1%
Two or More Races	12,743	6.0%	14,920	6.6%	16,783	7.1%
Hispanic Origin (Any Race)	18,196	8.6%	22,933	10.2%	27,684	11.8%

**Data Note:** Income is expressed in current dollars.

**Source:** U.S. Census Bureau, Census 2010 Summary File 1. Esri forecasts for 2017 and 2022.

August 09, 2017





# Demographic and Income Profile

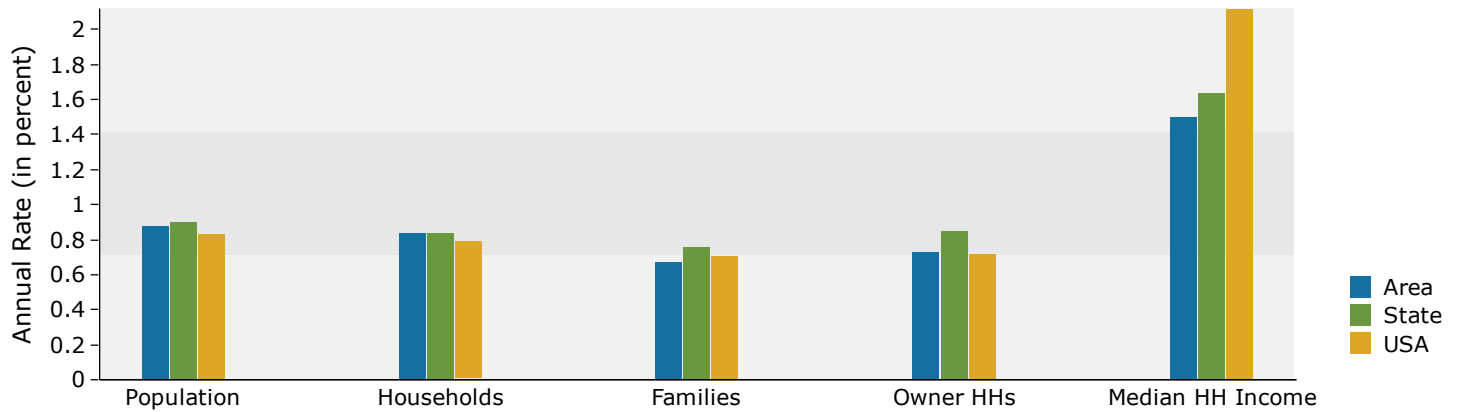
Sand Springs

Lat.: 36.135 Long.: -96.110

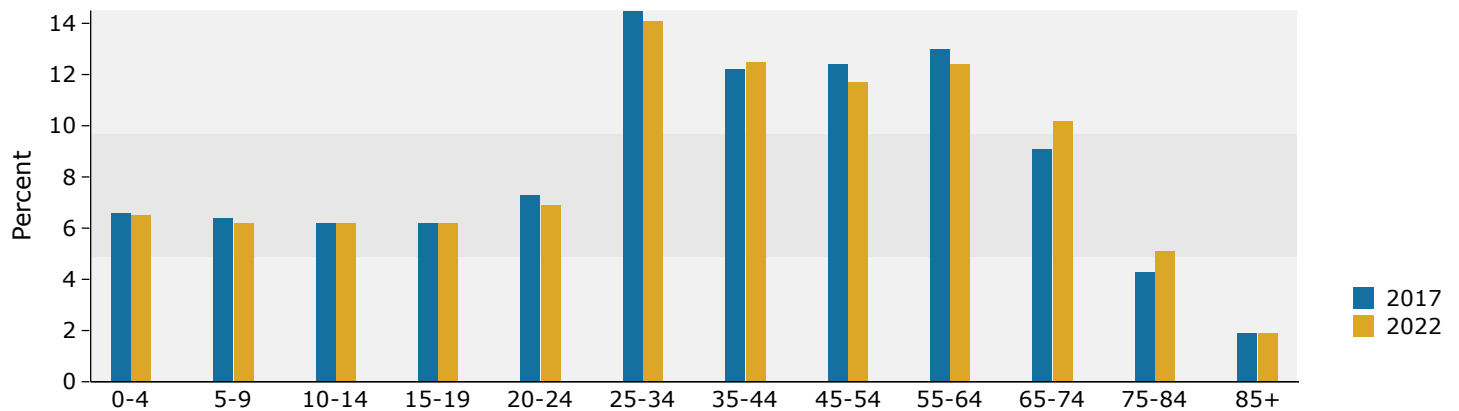
Ring: 10 mile radius

Prepared by INCOG

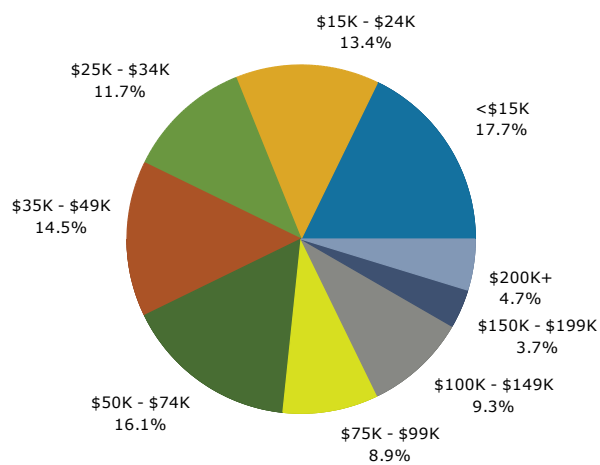
## Trends 2017-2022



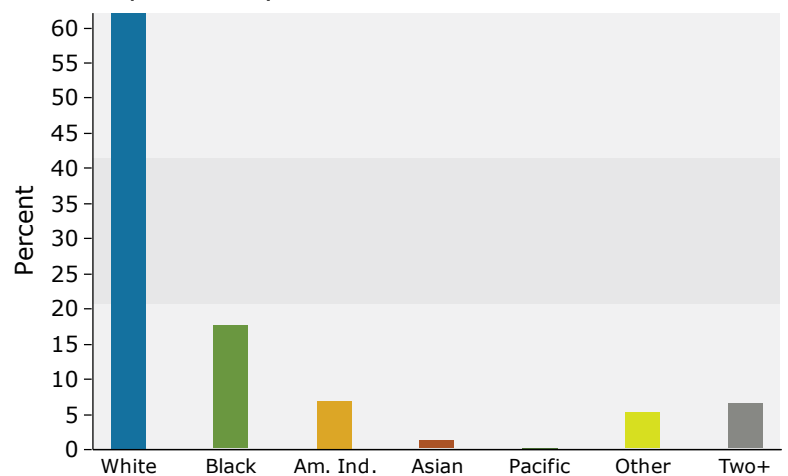
## Population by Age



## 2017 Household Income



## 2017 Population by Race



2017 Percent Hispanic Origin: 10.2%

Source: U.S. Census Bureau, Census 2010 Summary File 1. Esri forecasts for 2017 and 2022.

August 09, 2017